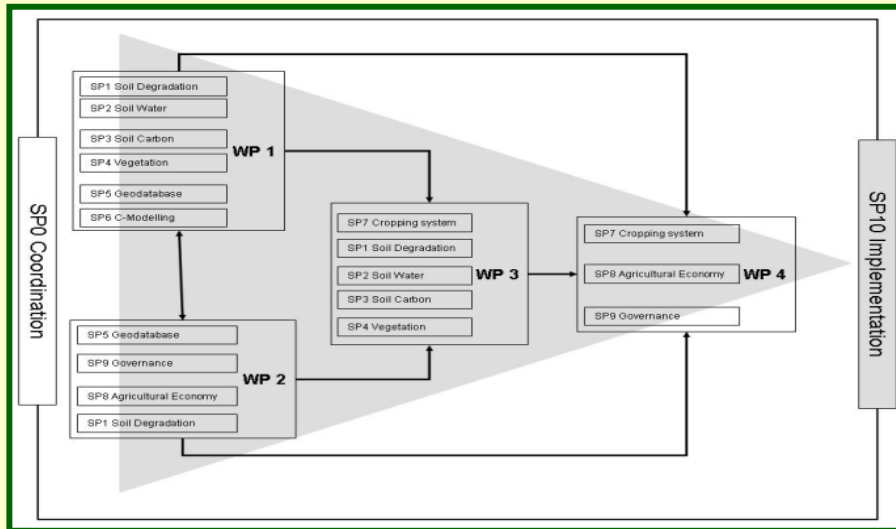


Ecological and Economic Strategies for Sustainable Land Management in the Russian Steppes: A Potential Solution to Climate Change

Horizontal and Vertical Integration:

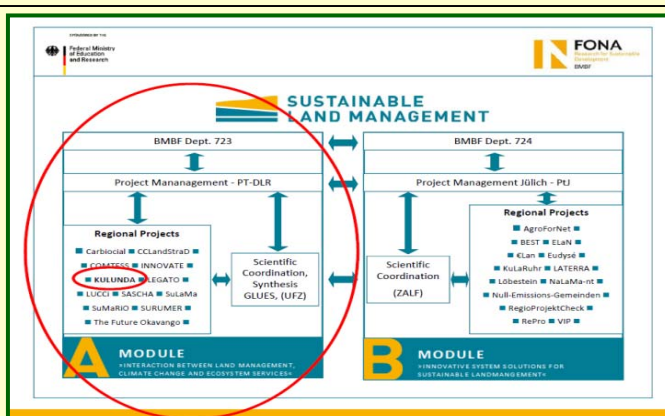
The general concept of the project is structured into four working packages (WP), each of which combines several subproject work programs to integrated approaches. The project is organized in **four work tasks** which will focus on:

- Analyzing the effects of agricultural management practices on soil properties and other ecosystem properties with regard to climate conditions,
- Development and implementation of adopted land use practices and steppe restoration measures,
- Analyzing the effects of natural and social framework on land use decisions,
- Development and implementation of stakeholder driven planning and consulting platform which allows the application of sustainable land use strategies.

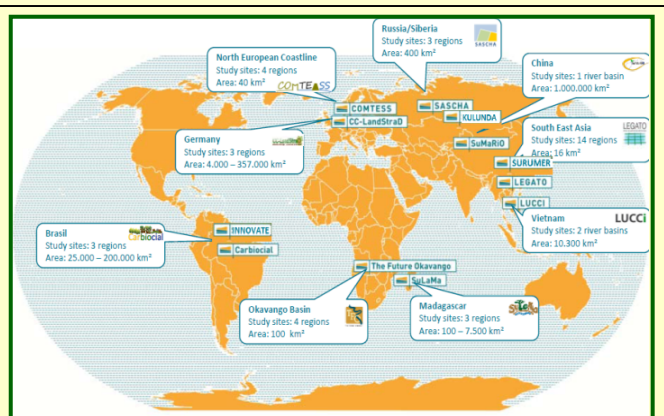


KULUNDA project structure and working packages

Scientific Coordination and Synthesis - GLUES



BMBF sustainable land management program funding measure: Modul A



BMBF sustainable land management program funding measure: Modul A - Funded projects

Funding Measure: BMBF – Funding Measure “Sustainable Land Management” Module A
Project Director: Prof. Dr. Dr. h. c. Manfred Frühauf (Martin-Luther–University Halle-Wittenberg, Faculty of Natural Sciences III, Institute for Geosciences and Geography).
Scientific Coordinator: Dr. M. Kasarjyan (Martin-Luther–University Halle-Wittenberg, Faculty of Natural Sciences III, Institute for Geosciences and Geography).